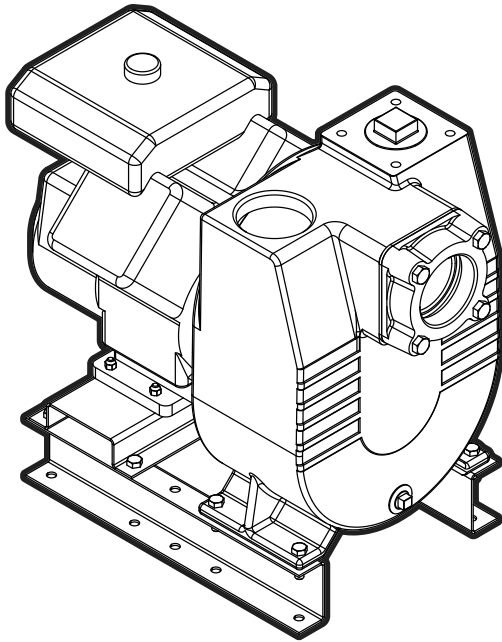


Gas Engine FMIG

BOOK: GES-020

DATE: February 17, 2014



Features:

- **Volute:** Cast gray iron rugged construction. Self-priming with priming and drain plugs. Removable front cover features a built in check valve to facilitate priming.
- **Impeller:** Cast iron semi-open, two vane type, capable of handling spherical solids. Replaceable steel wear plate for maintaining maximum pump efficiency.
- **Mechanical Seal:** Standard carbon/ceramic faces, Viton® elastomers, 300 series stainless components.
- **Engine:** Industry recognized Honda or Kohler.
- **Mounting:** Horizontal position.

Applications:

- Irrigation
- Construction
- Mining
- Commercial
- Municipal
- Light Industrial

Viton® is a registered trademarks of E. I. du Pont de Nemours and Company.

Specifications:

Capacities: to 400 gpm

Heads: to 165 feet

Working Pressure: 120 psi max

Temperature: 212 °F max

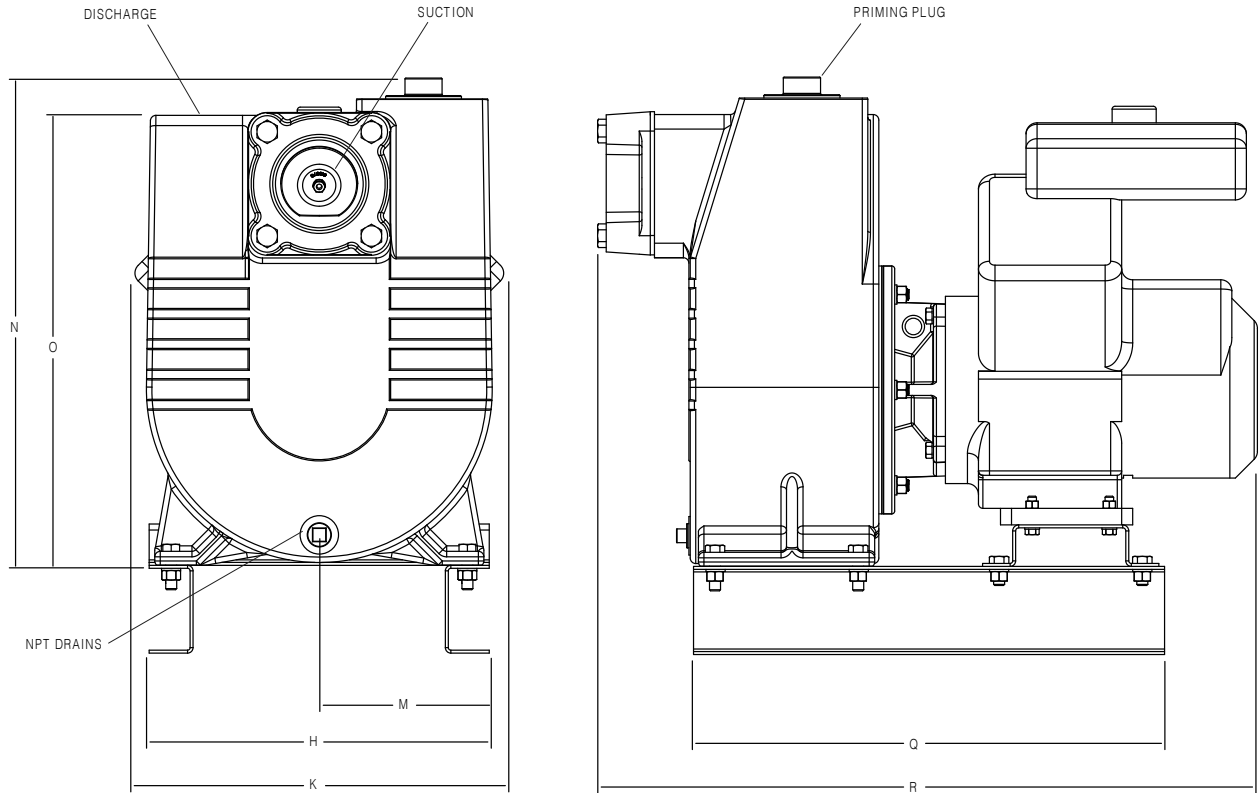
Rotation: clockwise viewed from engine side

Pipe Connections: NPT

Model	Discharge	Suction
FMIG30	3"	3"
FMIG40	4"	4"

Gas Engine FMIG

Dimensional Drawings:



Dimensions:

Model	H	K	M	N	O	Q	R
FMIG30-13H	12.75	17.25	11.50	17.50	15.85	-	24.60
FMIG40-18K	15.5	17.74	8.87	28.25	26.31	21.37	29.95
FMIG40-27K	15.5	17.74	8.87	28.25	26.31	21.37	29.95

Note: Dimensions are for estimating purposes only. All dimensions in inches.

Gas Engine FMIG

Ordering Information:

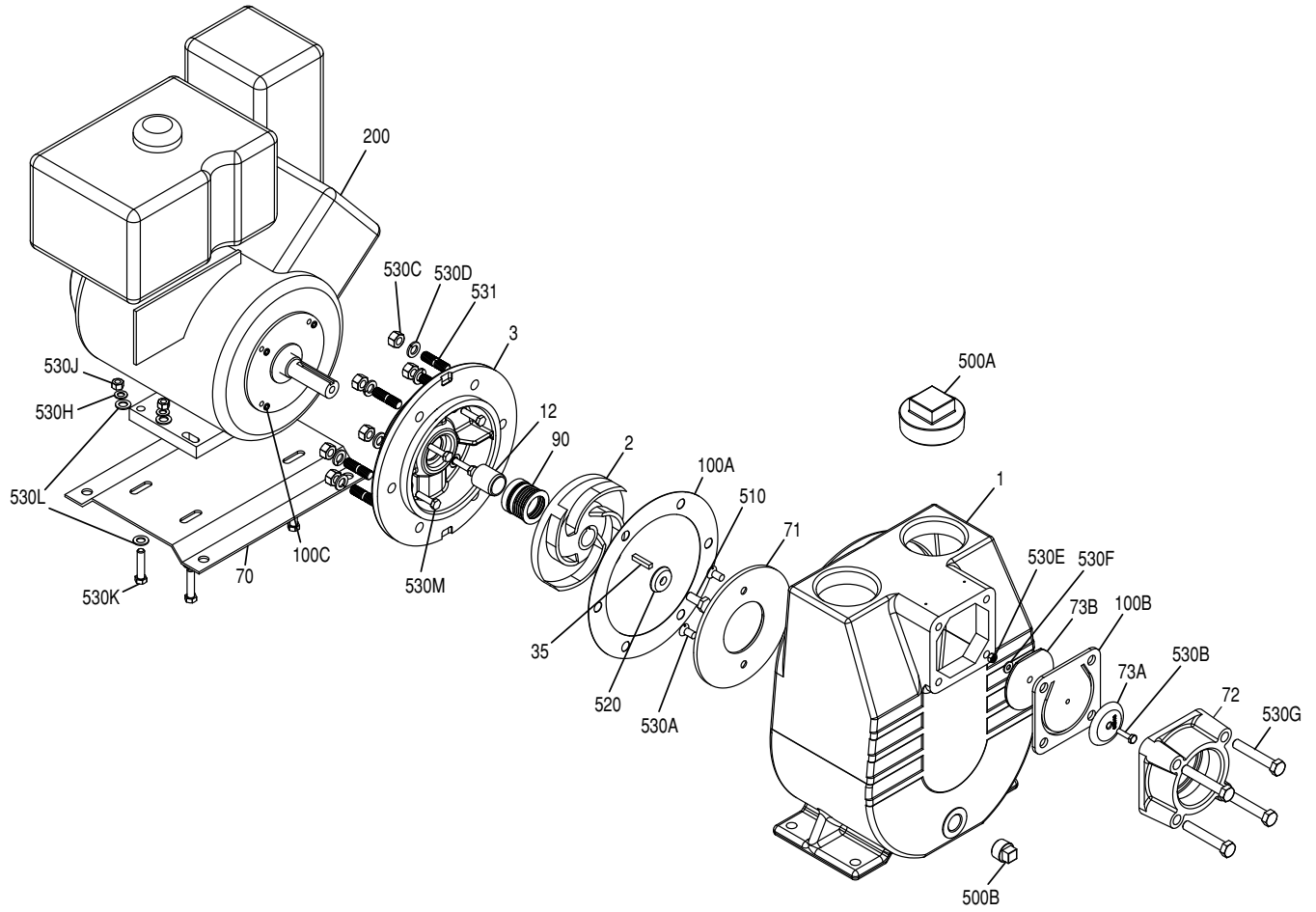
Pump Size (Dis x Suc)	CC	Model Description	Engine Description	Order Number	Low Oil Shut-Off	Wt.
3 x 3	289	FMIG30-13H	Honda, with 6.9 qt. fuel tank	90281113	YES	270
4 x 4	624	*FMIG40-18K	Kohler	90281218	YES	320
4 x 4	725	*FMIG40-27K	Kohler	90281227	YES	320

Note: All weight in pounds.

*Equipped with electric start. Battery, fuel tank, and cables not included.

Gas Engine FMIG

Exploded Parts Drawing:



Gas Engine FMIG

Materials and Parts:

Fig No.	Part Description	Part No.		Materials of Construction
		FMIG30-13H	FMIG40-18K/FMIG40-27K	
1	Pump Case	305455002	305455003	Cast Iron, ASTM-A48 CL30
2	Impeller	See Table 1		Cast Iron, ASTM-A48 CL30
3	Motor Adapter	305456001	305456002	Cast Iron, ASTM-A48 CL30
12	Mechanical Seal Shaft Sleeve	305456003	305456004	416 Stainless steel
35	Impeller Shaft Key	305456005	305456006	316 Stainless steel
70	Base, Engine Frame	305456007	305455018 *	CRS
71	Wear Plate	305455008	305455009	CRS
72	Check Valve	305454019	305454020	CRS
73A	Top Weight- Check Valve	305454022	305454023	Cast Iron, ASTM-A48 CL30
73B	Bottom Weight - Check Valve	305454025		Cast Iron, ASTM-A48 CL30
90	Mechanical Shaft Seal	305463043	305463044	Carbon/CeramicViton/316SS
100A	Case Gasket	305454041	305454042	NA60
100B	Flapper Valve	305454044	305454045	Neoprene
100C	O-Ring - Motor Bracket (4-Pack)	305463087	n/a	Viton
200	Engine	See Below		Misc.
500A	Pipe Plug 3" (3-Pack)	305463076		Cad-Plated Steel
500B	Pipe Plug 3/4" (3-Pack)	305463050		Cad-Plated Steel
503	Water Slinger	305456009	305456010	Neoprene
510	Impeller Hex Cap Screw	305463088	305463211	18-8 Stainless
520	Impeller Washer	305456011	305456012	300-Series stainless Steel
531	Threaded Stud (6-Pack)	305463089		Zinc Plated Steel
530A	Screw, Flat Head Slotted (6-Pack))	305463079		Zinc Plated Steel
530B	Bolt, Flapper	305463080	305463058	300-Series stainless Steel
530C	Hex Nuts - Adapter/Case(6-Pack)	305463059		Zinc Plated Steel
530D	Lockwasher - Adapter/Case (6-Pack)	305463060		Zinc Plated Steel
530E	Nut, Flapper	305463082	305463062	300-Series stainless Steel
530F	Washer, Flapper	305463084	n/a	300-Series stainless Steel
530G	Valve Hex Cap Screw (4-Pack)	305463085	305463086	Zinc Plated Steel
530H	Lockwasher - Base/Engine(8-Pack)	305463032		Zinc Plated Steel
530J	Hex Nut - Base/Engine (8-Pack)	305463033		Zinc Plated Steel
530K	Hex Bolt - Base/Engine (4-Pack)	305463090	305463179	Zinc Plated Steel
530L	Washer - Base/Engine (4-Pack)	305454046		Zinc Plated Steel
530M	Hex Bolt - Motor/Adaptor (4-Pack)	305463091	305463162	Zinc Plated Steel
Not Shown	Lockwasher - Motor/Adaptor	n/a	305463212	Zinc Plated Steel

Viton® is a registered trademarks of E. I. du Pont de Nemours and Company.

* Includes base, channels, and hardware

Table 1:

Replacement Pump End Only			
Model	Description	Part No.	Materials of Construction
FMIG30-13H	Impeller	305456013	Cast Iron, ASTM-A48 CL30
FMIG40-18K	Impeller	305456014	Cast Iron, ASTM-A48 CL30
FMIG40-27K	Impeller	305456015	Cast Iron, ASTM-A48 CL30

Model	Engine Description	Part No.
FMIG30-13H	ENG HONDA GX390U1QAE2 289cc OHV	202258
FMIG40-18K	ENG KOHLER CH620-0017 624cc	202253
FMIG40-27K	ENG KOHLER CH740-0124 725cc	202259

Gas Engine FMIG

Performance Curve:

